

MONTHLY MEMBERSHIP PROGRESS REPORT

LOCATION AUSTRALIA

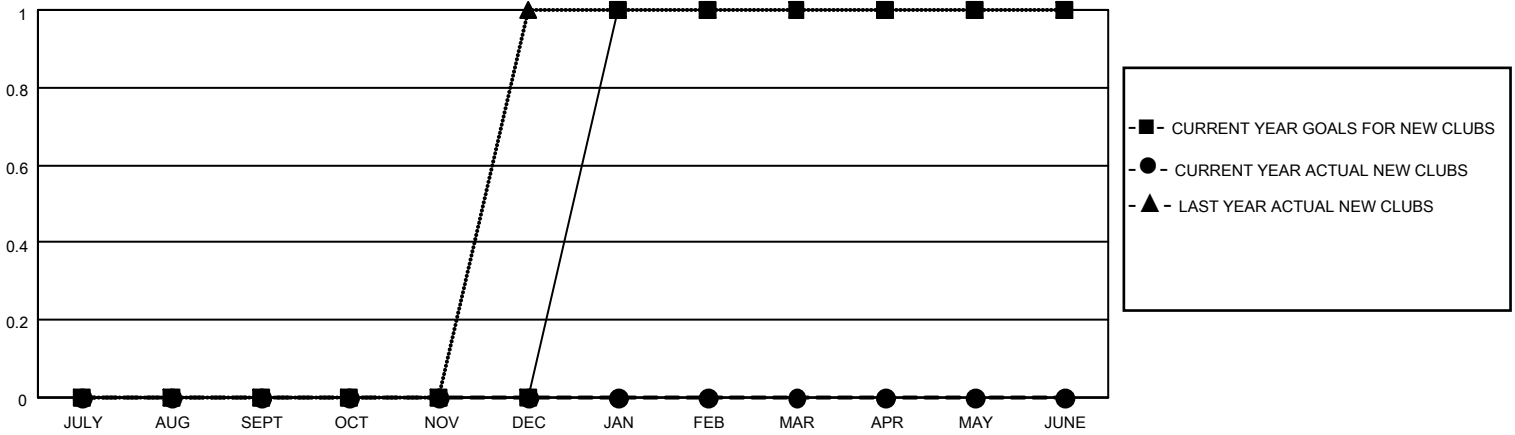
District 201N5

Results as of: 5/31/2022

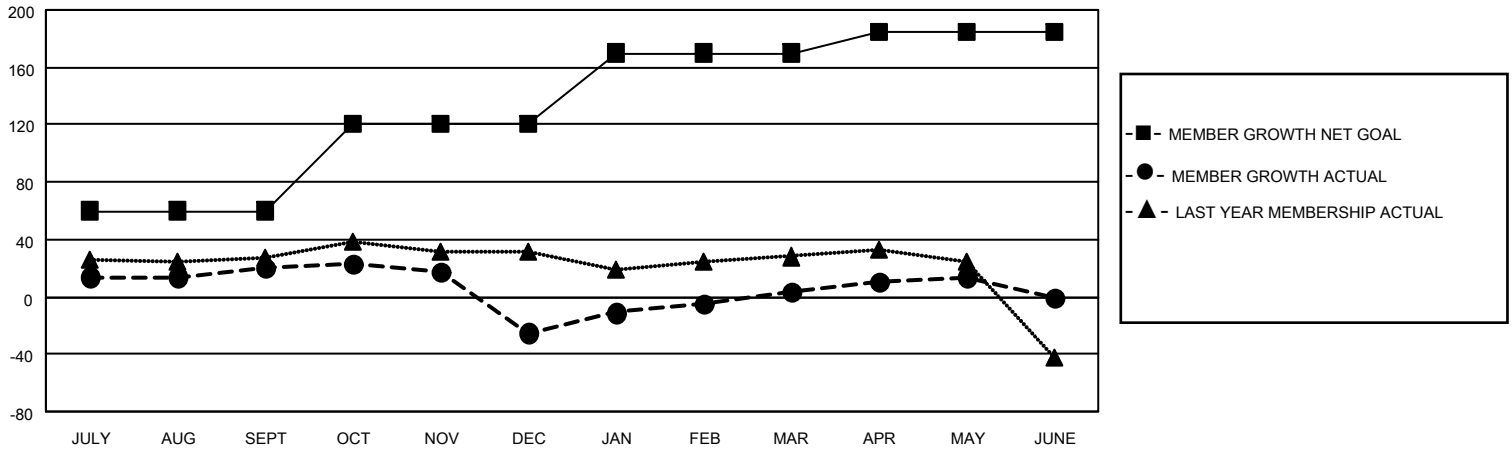
Clubs			
RESULTS FOR 2021-2022			
QUARTER	NEW CLUB GOAL	NEW CLUBS	DROPPED CLUBS
JULY/AUG/SEPT	0	0	4
OCT/NOV/DEC	0	0	0
JAN/FEB/MAR	1	0	2
APR/MAY/JUNE	0	0	0

Members			
RESULTS FOR 2021-2022			
QUARTER	MEMBER GROWTH NET GOAL	MEMBER GROWTH ACTUAL	DROPPED MEMBERS ACTUAL (including transfers)
JULY/AUG/SEPT	60	37	12
OCT/NOV/DEC	60	38	77
JAN/FEB/MAR	50	71	26
APR/MAY/JUNE	15	35	22

GOALS AND ACTUAL NEW CLUBS CUMULATIVE



GOALS AND ACTUAL MEMBERS CUMULATIVE



DROPPED CLUBS: 6

43 CLUBS OF 71 ADDED 1 OR MORE NEW MEMBERS

GENDER DISTRIBUTION

MALE	958 (62.78%)
FEMALE	567 (37.16%)
NON BINARY	1 (0.07%)
PREFER NOT TO ANSWER	0 (0.00%)

DROPPED MEMBERS

[CLICK HERE FOR CUMULATIVE MEMBERSHIP DATA](#)

DECEASED	8
CLUB CANCELLED	0
OTHER	129
TOTAL	137

TOTAL FAMILY UNIT MEMBERS 221

FAMILY MEMBERS PAYING HALF DUES 117